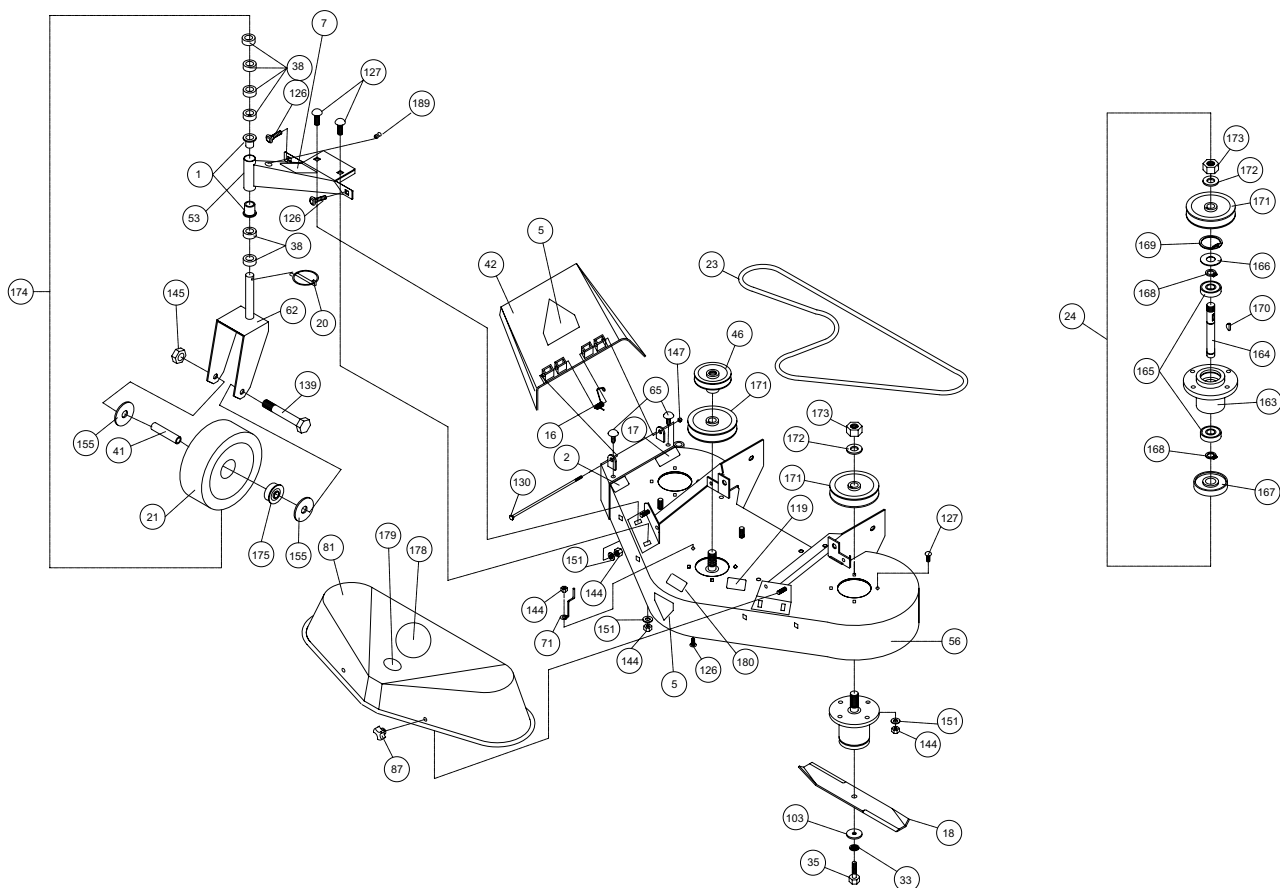




18 PARTS DRAWING

**FM3301IN & FM3301INE
DECK ASSEMBLY**

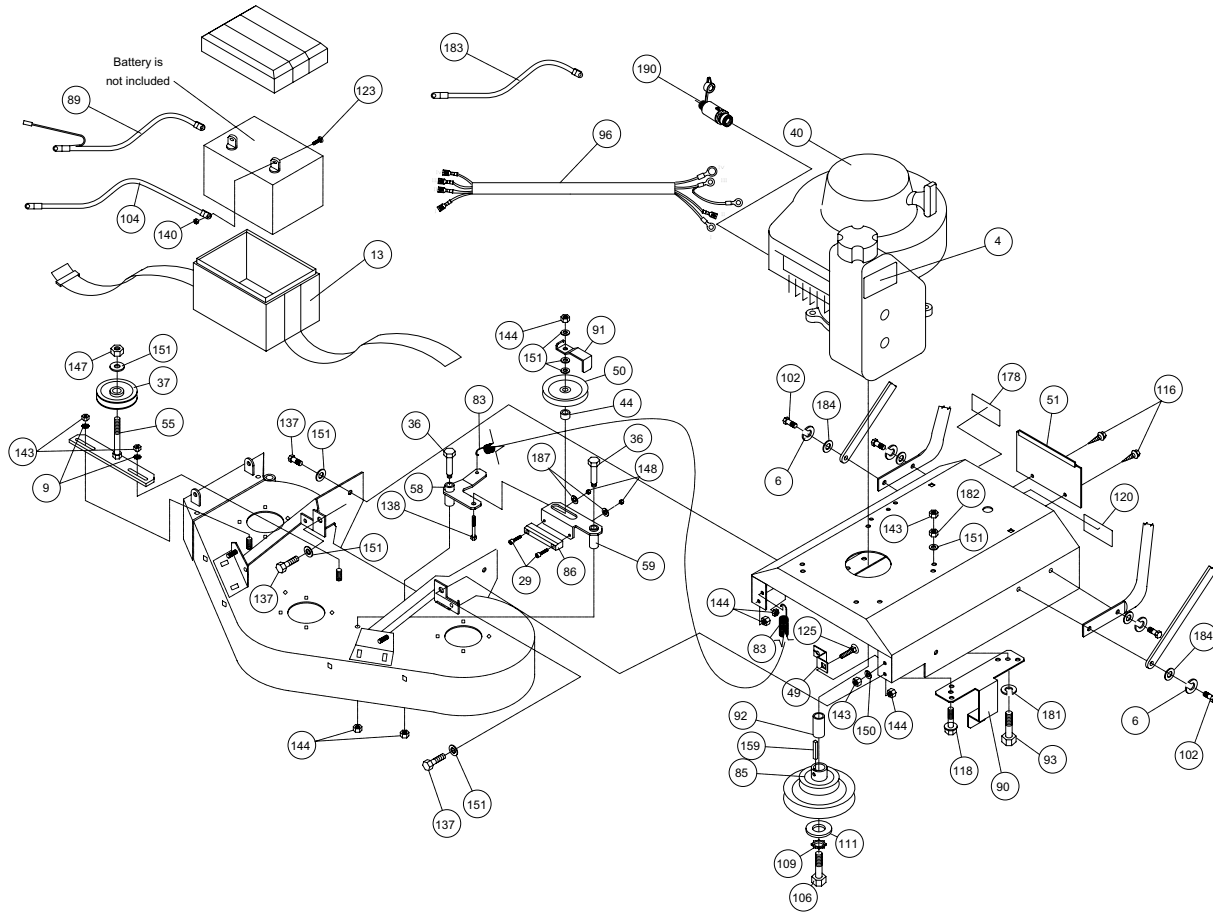


ITEM NO.	DESCRIPTION	FM3301INE QTY	FM3301IN QTY	ITEM NO.	DESCRIPTION	FM3301INE QTY	FM3301IN QTY
		PART NO.	PART NO.			PART NO.	PART NO.
1	BUSHING BRONZE	520184	4	126	BOLT CARRIAGE 3/8-16X1" ZP	8024058	5
2	LABEL DANGER FLY	810736	1	127	BOLT CARRIAGE 3/8-X 1 1/4	8024059	16
5	LABEL WARNING	400424	2	130	SCREW CAP 1/4 - 20 X 7"	8041023	1
7	LABEL HGT. GUIDELINE	520159	1	139	SCREW CAP 1/2-13 X 4 1/2	8041107	2
16	SPRING EXHAUST CHUTE	510205	1	144	NUT 3/8-16 LOCK NYLON	8160003	21
17	LABEL WARNING MOWER	510206	1	145	NUT 1/2-13 LOCK NYLON	8160005	2
18	BLADE 11.88"	520001	3	147	NUT 1/4-20 LOCK NYLON	8160001	1
20	LYNCH PIN 3/16" X 1 9/16	520004	2	151	WASHER 5/16" FC	8171003	20
21	WHEEL AND TIRE 8" ASSY.	520005	2	155	WASHER 3/4 FC	8172015	4
23	BELT SPINDLE DRIVE	520007	1	163	HOUSING SPINDLE	520008-01	3
24	SPINDLE ASSY FM	520008	3	164	SHAFT SPINDLE 1215 C. D. S.	520008-02	3
33	WASHER 1/2 INNER TOOTH	520025	3	165	BEARING BALL 6305-25	520008-03	6
35	SCREW CAP 1/2-20X1.25	520028	3	166	WASHER	520008-04	3
38	BUSHING CASTER SPACERS	520034	12	167	SHIELD	520008-05	3
41	SPACER FRONT CASTER	520041	2	168	RETAINING RING	520008-06	6
42	EXHAUST CHUTE DEFLECT.	520042	1	169	RETAINING RING	520008-07	3
46	PULLEY DECK FRONT DRIVE	520047	1	170	WOODRUFF KEY # 605	520008-08	3
53	CASTER ARM FM WA ?	520067-S	2	171	PULLEY 4.75" DIA. 3/4" BORE	520008-09	3
56	DECK WA W/ LABELS	520071-S	1	172	MACHINERY BUSHING 3/4"	520008-10	3
62	BRACKET CASTER FM WA	520161	2	173	NUT 3/4-16 NYLON HEX	520008-11	3
65	PLUG 3/8" BUTTON HEAD	520081	2	174	FRONT CASTER ASSY.	520140	2
71	WIRE BELT FINGER	520088	1	175	BEARING CASTER WHEEL	520124	4
81	GUARD BELT W/ LABELS FM	520100-S	1	178	LABEL BGI BIG CIRCLE	430303	1
87	KNOB 3 PRONG 1/4"	520109	4	179	LABEL 33" CUT FM	520115	1
103	WASHER 1/2" X 2	610308-P	3	180	LABEL MADE IN USA	520116	1
119	LABEL DANGER	900327	1	189	FITTING GREASE	610363	2



18 PARTS DRAWING

FM3301IN & FM3301INE ENGINE ASSEMBLY

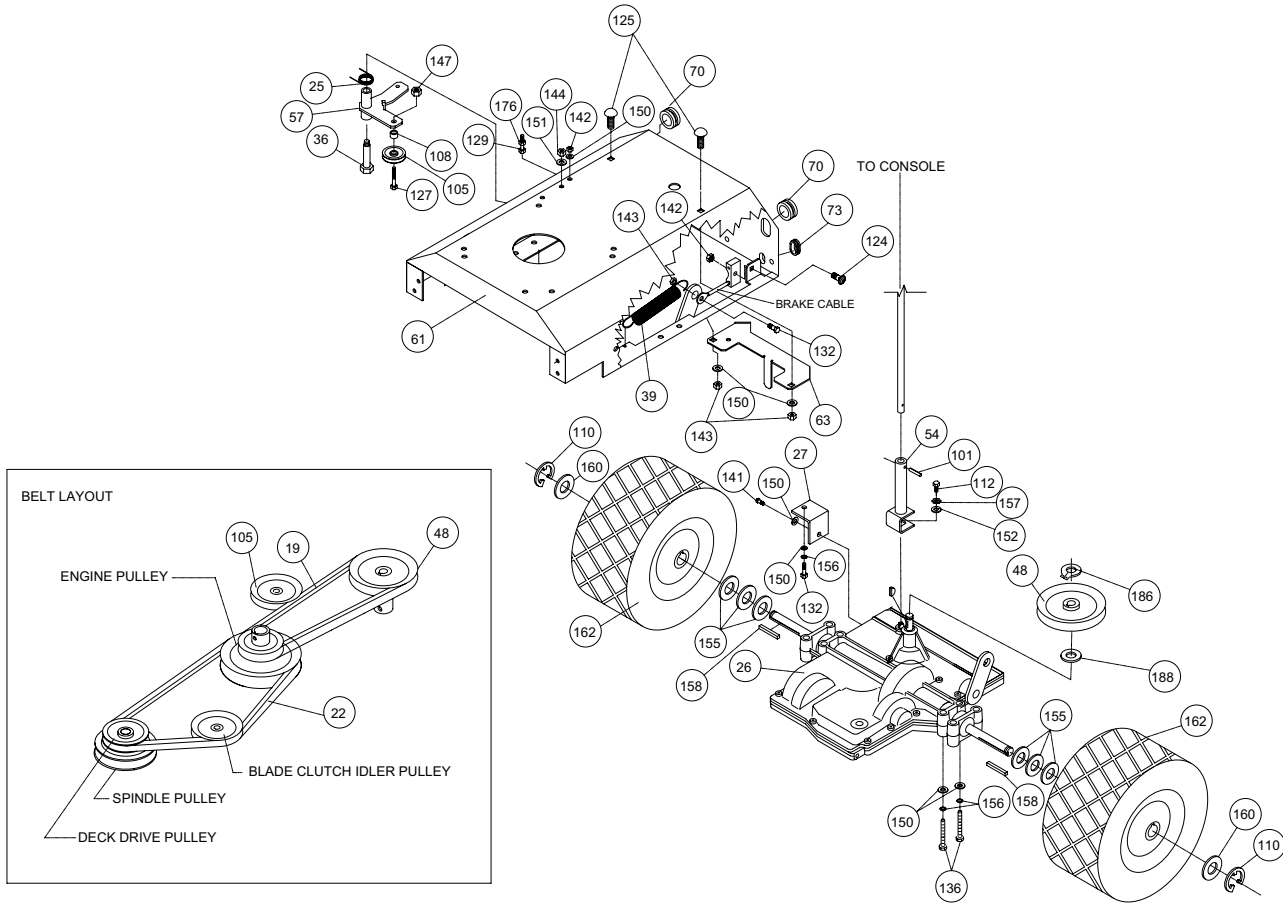


ITEM NO.	DESCRIPTION	FM3301INE QTY	FM3301IN QTY	ITEM NO.	DESCRIPTION	FM3301INE QTY	FM3301IN QTY
		PART NO.	PART NO.			PART NO.	PART NO.
4	LABEL DO NOT FILL HOT	400268	400268	106	SCREWCAP 7/16 X 2 1/4 GR 8	830114	830114
6	WASHER SPLIT LOCK 3/8"	8177012	8177012	109	WASHER LOCK 7/16 TWIST	850132	850132
9	WASHER 5/16" TWISTED LK.	430298	430298	111	WASHER ENGINE PULLEY	850443	850443
13	BOX BATTERY ASSY	500300	-	116	SCREW 1/4" - 20 X 5/8"	890359	890359
29	SCREW SOCKET #10 X 1"	520018	520018	118	SCREWCAP 3/8" 1 1/2" TAP	890408	890408
36	BOLT SHOULDER 1/2" X 2"	520031	520031	120	LABEL GUARDS	900327	900327
37	IDLER PLASTIC 4" X 0.375	520032	520032	123	BOLT CARRIAGE 1/4" X 3/4"	8024039	8024039
40	ENGINE 13 HP B&S	520169	520168	125	BOLT CARRIAGE 5/16" X 1"	8024040	8024040
44	SPACER NYLON BRAKE	520045	520045	137	SCREW CAP 3/8"-16 X 1 HEX	8041050	8041050
49	BRKT CLUTCH CABLE FM	520052	520052	138	SCREW CAP 3/8"-16 X 2 HEX	8041054	8041054
50	PULLEY IDLER BLADE DRIVE	520061	520061	140	NUT LOCK 1/4"-20 NYLON	8160001	8160001
51	PLATE ACCESS DOOR FM	520062	520062	143	NUT LOCK 5/16"-18 NYLON	8160002	8160002
55	BRKT IDLER DECK BLADE WA	520070	520070	144	NUT LOCK 3/8"-16 NYLON	8160003	8160003
58	PLATE BLADE CLUTCH IDL.	520073	520073	147	NUTLOCK 3/8"-16 LW TH ZP	8161042	8161042
59	PLATE BLADE CLUTCH BK	520074	520074	148	NUT LOCK #10	8155007	8155007
83	SPRING TENSION WIRE	520103	520103	150	WASHER 1/4" FC	8171002	8171002
85	PULLEY DOUBLE 6 / 3.5 FM	520105	520105	151	WASHER 5/16" FC	8171003	8171003
86	BRAKE PUCK FM	520106	520106	159	KEY 1/4" SQ. X 2.25" LONG	9201123	9201123
89	CABLE BATTERY POS 10"	520111	-	178	LABEL DESIGN PATENT FM	520191	520191
90	BRACKET BELT FINGER	520112	520112	181	WASHER SPLIT LOCK 5/16"	8177011	-
91	BRACKET BELT FINGER BK.	520113	520113	182	NUT JAM 5/16"	8142002	-
92	SPACER HUB 1" BORE 1.5"	520114	520114	183	POSITIVE CABLE 10"	520123	-
93	SCREWCAP 5/16" -18 x 2"	8041032	-	184	WASHER 3/8" FLATCUT	8171004	8171004
96	WIRE HARNESS	520118	-	187	WASHER #10 FLATCUT	8171001	8171001
102	SCREWCAP 3/8" - 1.25"	8041051	8041051	190	VALVE OIL DRAIN	520182	520182
104	CABLE BATTERY BLACK 10"	790133	-				



18 PARTS DRAWING

**FM3301IN & FM3301INE
DRIVE ASSEMBLY**

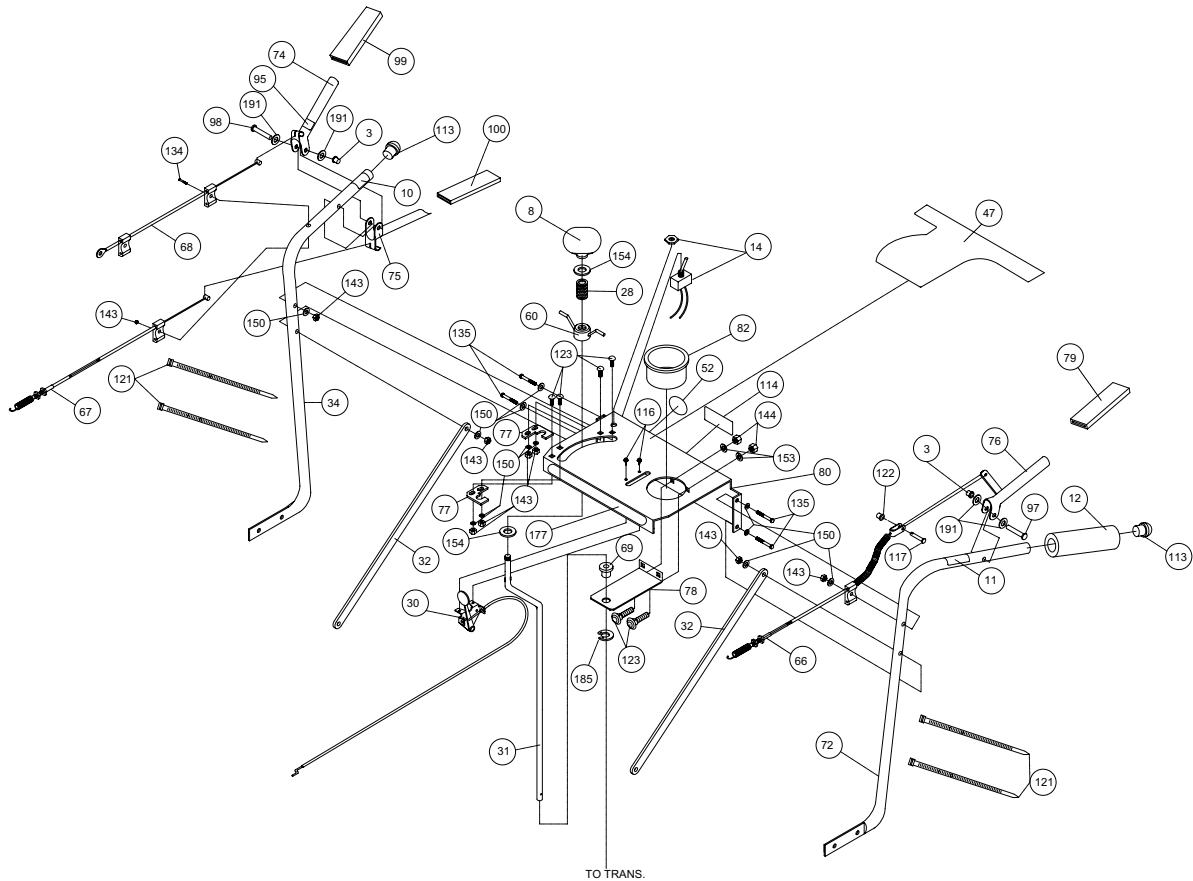


ITEM NO.	DESCRIPTION	FM3301INE QTY	FM3301IN QTY	ITEM NO.	DESCRIPTION	FM3301INE QTY	FM3301IN QTY
19	BELT TRANS DRIVE FM	520003	1	127	SCREWCAP 3/8-16 X 1 3/4	8041053	1
22	BELT BLADE DRIVE FM	520006	1	129	SCREWCAP 1/4"-20 X 2.75"	8041013	1
25	SPRING TORSION WIRE	520009	1	132	SCREWCAP 5/16-18 X 1.25"	8041029	1
26	TRANSAXLE 5SPD FM	520010	1	136	SCREW CAP 5/16 - 18 x 2.75	8041035	4
27	BRACKET T-AXLE SUPPORT	520016	1	141	SCREW SELF TAP 5/16	8123128	1
36	BOLT SHOULDER 1/2" X 2"	520031	1	142	NUT LOCK 1/4-20 NYLON	8160001	2
39	SPRING BRAKE	520037	1	143	NUT LOCK 5/16-18 NYLON	8160002	3
48	PULLEY 5" OD "A" SEC. FM	520181	1	144	NUT LOCK 3/8-16 NYLON	8160003	1
54	SHIFT LINKGAGE FM	520068	1	147	NUTLOCK 3/8"-16 LW TH ZP	8161042	1
57	BRKT IDLER GRND DRIVE	520072	1	150	WASHER 1/4" FC	8171002	5
61	BASE ENGINE W/INSERTS	520177	1	151	WASHER 5/16" FC	8171003	1
63	BRACKET BELT GUIDE DRV	520078	1	152	WASHER 1/4 SAE	8172007	1
70	GROMMET RUBBER 1"	520087	2	155	WASHER 3/4 FC	8172015	6
73	GROMMET RUBBER 1.25"	520092	1	156	WASHER LOCK 5/16 SPLIT	8177011	5
101	ROLL PIN 1/4" X 1.0 IN LONG	520156	1	157	WASHER LOCK 1/4" EXT.	8181007	1
105	PULLEY IDLER TENSION	800260	1	158	KEY 3/16 x 2 1/8	9201087	2
108	TUBE PIVOT IDLER VQ	830526	1	160	WASHER 3/4 THIN	850238	2
110	RING SNAP 0.75	850230	2	162	WHEEL AND TIRE 13"	830177	2
112	SCREW CAP 1/4-28X1/2" GR 5	850408	1	176	NUT JAM 1/4-20	8143001	1
124	BOLT CARR. 1/4-20X1.25"	8024023	1	186	RING SNAP 5/8 T.A.	850233	1
125	BOLT CARR. 5/16-18X1"	8024058	2	188	WASHER 3/4	850230	1



18 PARTS DRAWING

**FM3301IN & FM3301INEB
HANDLE ASSEMBLY**

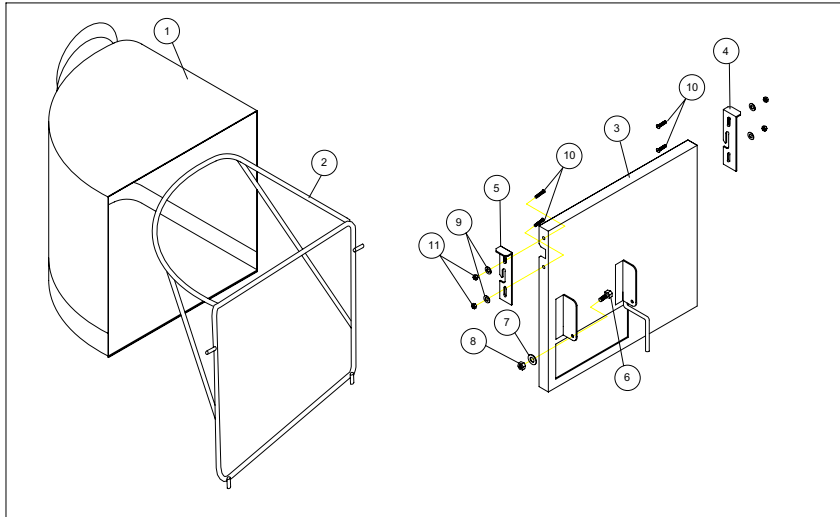


TO TRANS.

ITEM NO.	DESCRIPTION	FM3301INE QTY	FM3301IN QTY	ITEM NO.	DESCRIPTION	FM3301INE QTY	FM3301IN QTY
		PART NO.	PART NO.			PART NO.	PART NO.
3	PALNUTS 3/8"	360218	2	80	CONSOLE FM W/ LABELS	520146	1
8	KNOB 1/2" THREAD	430128	1	82	CUP HOLDER	520102	1
10	LABEL CLUTCH DRIVE	500176	1	95	LABEL PUSH TO RELEASE	520117	1
11	LABEL BLADE DRIVE	500177	1	97	CLEVIS PINS 3/8 - 1.625	520119	1
12	GRIP HANDLE 1" x 7"	500267	1	98	CLEVIS PINS 3/8 - 2.125	520120	1
14	SWITCH ELECTRIC W/ NUT	500307	1	99	GRIP LEVER 0.125-1.00-3.75	520121	1
28	SPRING COMPRESSOR 1/2"	520017	1	100	GRIP LEVER 0.125-0.75X3.75	520122	1
30	CONTROL THROTTLE POS	520019	1	113	PLUG TUBE INSERT 1"	890132	2
31	ROD SHIFT LINKGAGE	520179	1	114	LABEL EAR-EYE-BREATHE	890254	1
32	BAR HANDLE BRACE FM	520024	2	116	SCREW 1/4" - 20 X 5/8	890359	2
34	HANDLE RH FM	520026-S	1	117	PIN CLEVIS 5/16-24	830513	1
47	LABEL CONSOLE	520048	1	121	TY-WRAP	900407	4
52	LABEL READ MANUAL	890301	1	122	PAL NUTS 5/16"	360203	1
60	SHIFT LOCK HANDLE FM WA	520075	1	123	BOLT CARRIAGE 5/16-18 X 3/4	8024039	6
66	CABLE CLUTCH BLADE FM	520083	1	134	SCREW CAP 5/16-18 X 2	8041032	1
67	CABLE CLUTCH DRIVE FM	520084-S	1	135	SCREWCAP 5/16-18 x 2 1/4	8041033	4
68	CABLE CLUTCH BRAKE FM	520085	1	143	NUT LOCK 5/16-18 NYLON	8160002	9
69	BUSHING NYLON	500130	1	144	NUT LOCK 3/8-16 NYLON	8160003	2
72	HANDLE LH FM	520091-S	1	150	WASHER 1/4" FC	8171002	12
74	LEVER CONTROL BRAKE FM	520093-S	1	153	WASHER 5/16 SAE	8172008	2
75	LEVER CONTROL DRIVE FM	520094	1	154	WASHER 1/2" SAE ZP	8172011	2
76	LEVER CONTROL BLADE FM	520095	1	177	LABEL BGI OVAL FM	520110	1
77	PLATE REV LOCK OUT	520096	2	185	RETAINING RING EXTERNAL	520176	1
78	BRACKET SHIFT PIVOT FM	520097	1	191	WASHER 5/16" FC	8171003	4
79	GRIP LEVER ORANGE	520098	1				

19.1 GRASS CATCHER KIT 520142

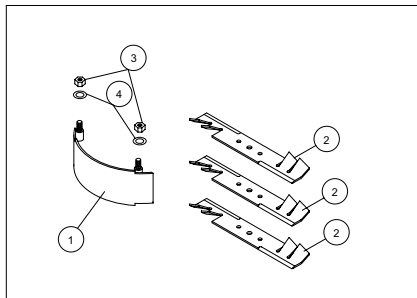
Purpose: Easily convert your mower to bag grass and leaves.



Item No.	Part No.	Description	Qty
1	520012	GRASS CATCHER BAG	1
2	520038	WIRE FRAME GRASS CATCHER FM	1
3	520069	GRASS CATCHER MOUNT WA FM	1
4	520059	BRACKET GRASS CATHCER LATCH L FM	1
5	520060	BRACKET GRASS CATHCER LATCH R FM	1
6	8041006	SCREWCAP 1/4" - 20 X 1" ZP	1
7	8171002	WASHER 1/4" FC ZP	1
8	8160001	NUTLOCK 1/4" - 20	1
9	520126	WASHER #8 SAE	4
10	520128	SCREW ROUND HEAD #8-32 X 3/4" CLEAR ZINC	4
11	520129	NUTLOCK #8 - 32	4
12	520147	LIT GRASS CATCHER KIT FM	1

19.2 MULCHING KIT 520144

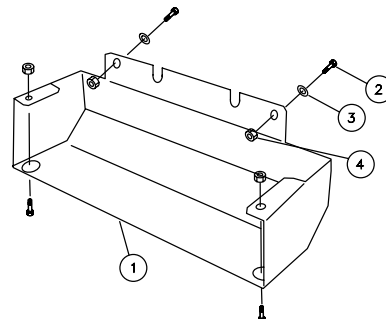
Purpose: Reduces lawn clippings to fine nutrient-rich particles that filter down to the soil.



Item No.	Part No.	Description	Qty
1	520014	MULCHING PLATE WA FM	1
2	520002	BLADE 11.88" MULCHING	3
3	8161042	NUTLOCK 3/8"-16 THIN HGT	2
4	8171003	WASHER 5/16 FC	2
5	520148	LIT MULCHING KIT FM	1

19.3 TRANSAXLE GUARD KIT 520155

Purpose: To protect the transaxle from accidental contact from concrete curbs or other hazards.



Item No.	Part No.	Description	Qty
1	520151	BRACKET GUARD TRANSAXLE FM	1
2	8041028	SCREWCAP 5/16-18X1"	4
3	8171002	WASHER 1/4 FC	2
4	8160002	NUTLOCK 5/16 - 18	4