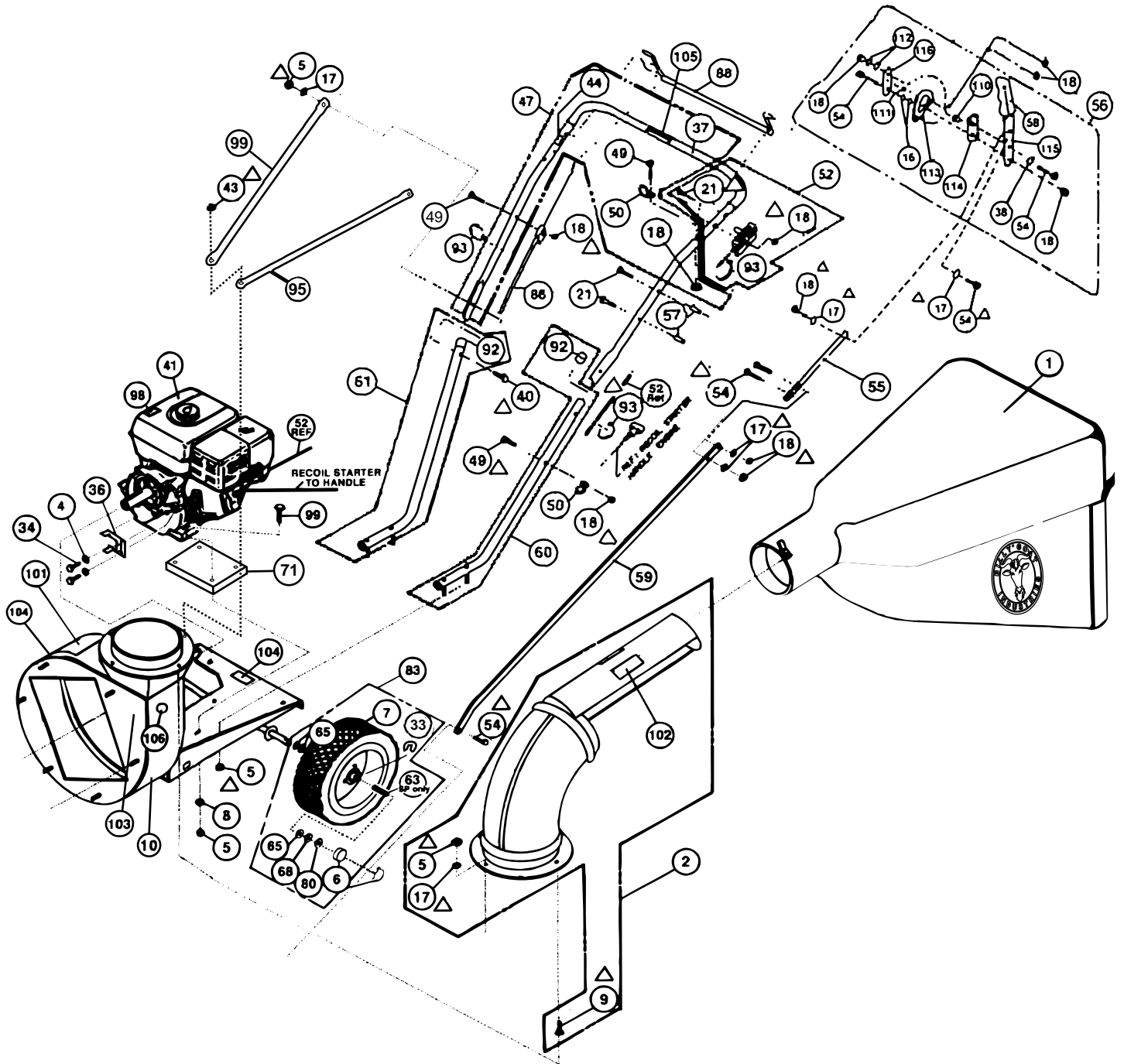


△ Denotes parts found in Parts Bag Assembly (shown on page 4).



**18 PARTS DRAWING**  
**BG1002, BG1002SP**



Item No.	19 PARTS LIST	Description	BG1002	Qty.	BG1002SP	Qty.
			Part No.		Part No.	
1	BAG (SERVICE STRAP ASSY NO. 900606) (SERVICE ZIPPER NO. 900478)		800730	1	800730	1
2	ELBOW ASS'Y (INCLUDES ITEM 5, 9, 17)		*810139	1	810139	1
3	WASHER, LOCK SPRING 1/4 MED		-	-	*8177010	1
4	WASHER, LOCK SPRING 5/16 MED		-	-	*8177011	5
5	NUT, LOCK 5/16-18		*8160002	20	*8160002	33
6	HUB CAP		900486	2	900486	2
7	WHEEL (PNEUMATIC PART NO. 400295)		400295	2	800994	2
8	WASHER, FLAT 5/16		*8171003	4	*8171003	4
9	SCREW, CAP 5/16-18 X 3/4		*8041026	4	*8041026	8
10	FRAME		811045	1	811046	1
11	KNOB, HAND		850154	2	850154	2
12	SCREW, MACHINE #10 - 24 X 2		*8059143	2	*8059143	2
13	NUT, LOCK CASTER		800227	2	800227	2
14	WASHER, 3/4 PLASTIC		800109	2	800109	2
15						
16	WASHER, FLAT CUT 1/4 (5/16 X 3/4 X 1/16)		*8171002	2	*8171002	11
17	WASHER, 5/16 SAE		*8172008	18	*8172008	18
18	NUT, LOCK 1/4-20		*8160001	14	*8160001	16
19	NUT, REGULAR 1/4-20		*8142001	2	*8142001	2
20	SCREW, CAP 1/4-28 X 1/2		-	-	850408	1
21	SCREW, CAP 1/4 - 20 NC x 1 3/4		*8041009	3	*8041009	3
22						
23	NOZZLE ASS'Y (INCLUDES ITEMS 97, 26, 95, 25, 24, 18)		800931	1	800931	1
24	LATCH SPRING		800311	1	800311	1
25	SCREW, CAP 1/4 - 20 X 3/4		*8041004	2	*8041004	2
26	CAP		800183	1	800183	1
27	SCREW CAP 7/16 - 20 X 1-1/4 GR 5 (TORQUE 60 FT - LBS)(81.4N.m)		800554	1	800554	1
28	WASHER LOCK 7/16 TWISTED TOOTH		850132	1	850132	1
29	KEY 1/4 SQ X 2.25 "		9201123	1	9201123	1
30	PARTS & LIT. BAG (INCL. 117(14), 5(10), 40(6), 93(3 push, 5 SP), 43(1), 54(3), 49(1), 9(4), 18(7 push, 8 SP), 19(2), 21(3), [SP only 45(1)])		800757	1	810166	1
31	IMPELLER ASSEMBLY (INCLUDES ITEMS 27, 28, 29, 32)		800988	1	800090	1
33	COTTER PIN 1/8 X 1		850230	2	850230	2
34	SCREW CAP 3/8-16 X 3/4		-	-	*8041048	2
35	WASHER LOCK 3/8		-	-	*8177012	4
36	GUARD BELT GUIDE		-	-	811053	1
37	GRIP HANDLE		400570	2	400570	2
38	WASHER LOCK 1/4 EXT		*8181007	1	*8181007	3
39	SCREW SM 1/4 x 3/8 HEX		*8122082	1	*8122082	3
40	SCREW CAP 5/16-18 X 2		*8041032	2	*8041031	2
41	ENGINE BRIGGS 10 HP INTEK IC		430352	1	430352	1
42						
43						
44	LABEL DRIVE		-	-	810207	1
45	EYE BOLT - CLUTCH LEVER		-	-	800312	1
46	KEY HI PRO 3/16 X 3/4		-	-	850234	1
47	HANDLE TOP ASS'Y (INCLUDES ITEMS 49(2), 50(2), 18(2))		810134	1	810134	1
48	SCREW SELF TAP 5/16 X 3/4 HEX		-	-	8123128	1
49	SCREW CAP 1/4-20 X 1 - 1/2		*8041008	3	*8041008	3
50	BAG LOOP		800178	3	800178	3
51	LABEL OIL CHAIN		-	-	830502	1
52	THROTTLE CONTROL ASS'Y (INCLUDES ITEMS 18, 21, 93)		900514-00	1	900514-00	1
53	WHEEL PROTECTOR		800169	2	800169	2
54	SCREW CAP 1/4-20 X 1		*8041006	6	*8041006	7
55	BAR LINK UPPER		811061	1	811061	1
56	DOOR NOZZLE FRICTION ASSY		830288	1	830288	1
57	SPACER		850198	2	850198	2
58	GRIP		850190	1	850190	1
59	LINK		810987	1	810987	1
60	LOWER HANDLE SECTION L.H. ASS'Y (INCLUDES ITEM 92)		800933	1	800933	1
61	LOWER HANDLE SECTION R. H. ASS'Y (INCLUDES ITEM 92)		800943	1	800943	1
62	DIFFERENTIAL WITH SPROCKET (DRIVE SPROCKET ONLY)		-	-	800996	1
63	KEY 3/16 SQ X 1 - 3/4 LG.		-	-	9201084	2
64	SPACER		-	-	800421	1
65	WASHER 3/4 SAE		*8172015	4	*8172015	6
66	BEARING PILLOW BLOCK		-	-	800557	2
67	SCREW CAP 5/16-18 X 1		-	-	*8041028	8
68	WASHER 3/4 (0.765 X 1.25 X 0.06)		-	-	850238	2
69	BELT DRIVE		-	-	800250	1
70	PULLEY WITH SET SCREW		-	-	800251	1
71	SPACER ENGINE INTEK		800965	1	430353	1
72	WASHER 3/8 WITH HOLE		-	-	800889	1
73	BAR BRACKET IDLER		-	-	810159	1
74	WASHER FENDER 1/4 (9/32 I.D. X 1 - 1/4 O.D. X 3/64)		-	-	*8172019	2
75	PULLEY IDLER		-	-	800260	1
76	BOLT IDLER		-	-	800888	1
77	NUT 3/8-16 REGULAR		-	-	*8142003	2
78	BAR IDLER		-	-	800261	1
79	SPRING		-	-	800242	1
80	WASHER HUB CAP		-	-	850237	2
81	IDLER ASS'Y, (INCLUDES 18 (1), 35 (1), 54(1), 73 THRU 78)		-	-	810211	1
82	PLATE ADAPTER		-	-	810157	1
83	WHEEL ASS'Y, BGSP includes 6 (1), 7(1), 65(1), 68 (1), 80(1), 63(1) )		800137-S	1	800995	2
84	TRANSMISSION REV FWD.		-	-	810206	1

**19** Parts List continued from page 11.

Item No.	19 PARTS LIST	Description	BG1002	Qty.	BG1002SP	Qty.
			Part No.		Part No.	
85	BRACKET ANGLE SHIFT		-	-	810158	1
86	CABLE CLUTCH ASS'Y BG		-	-	810160	1
87	GUARD CHAIN W/LABELS (INCLUDES ITEM 51)		-	-	811041	1
88	ROD BAIL ASS'Y		-	-	900970	1
89	GRIP		-	-	800885	1
90	ROD LEVER SHIFT ASS'Y (INCLUDES ITEM 89)		-	-	810162	1
91						
92	CAP ENDS		800392	2	800392	2
93	TY WRAP		900407	3	900407	5
94	CHAIN DRIVE BG		-	-	810156	1
95	HANDLE BRACE LH		800821	1	800821	1
96	CASTER DUAL ASSY (INCLUDES (1) OF EACH 11, 12, 13, 14)		800682	2	800682	2
97	PROTECTOR WHEEL ASS'Y (INCLUDES ONE EACH OF 21, 19, 18, 53)		800347	2	800347	2
98	LABEL DO NOT FILL WHILE ENGINE IS HOT		400268	1	400268	1
99	HANDLE BRACE RH		800822	1	800822	1
100	LABEL DANGER KEEPS HANDS & FEET AWAY		400424	1	400424	1
101	LABEL CAUTION		830138	2	830138	2
102	LABEL FLYING MATERIAL		810736	1	810736	1
103	LABEL EAR EYE BREATHING		890254	2	890254	2
104	LABEL WARNING GUARDS		-	-	900327	1
105	LABEL CLUTCH		-	-	830503	1
106	LABEL READ		890301	1	890301	1
107	GUARD PULLEY BG80		-	-	811037	1
108	GUARD BELT BG80		-	-	800021	1
109	SCREW SELF TAP 1/4 - 14 X 3/4		-	-	900505	2
110	NUT JAM 1/4-20		*8143001	1	*8143001	1
111	BALL 1/4		850194	1	850194	1
112	WASHER BELLVILLE 1/4		850207	2	850207	2
113	PLATE QUAD LIFT		850192	1	850192	1
114	PLATE FRICTION LIFT		850191	1	850191	1
115	BAR LEVER DOOR		850189	1	850189	1
116	PLATE CLAMP LIFT		850193	1	850193	1

\* Denotes standard hardware item that may be purchased locally.

△ Denotes parts found in parts bag assembly.

**16** OPERATION continued

**16.6** PROPULSION self propelled only

**PROPULSION:** BG self-propelled vacuums are equipped with 1 forward gear, neutral and reverse. With the engine running, the bail in released position and brake in on position, select desired drive gear. Lift bail against handle to engage drive (see figure 1 & 2). Smoothly engage the bail. Use good judgement when operating the self-propelled drive.

Using neutral, on level terrain is advisable when maneuvering in tight areas. This increases operator control, and can prevent bumping into nearby objects.

Do not force-shift gears of transmission. To assist gear meshing, it may be necessary to partially engage bail while shifting.

To stop machine, release operator's bail.

**For reverse - Set Throttle to Idle.**

With operator's bail released, pull shift lever reverse position. Then smoothly lift operator's bail against handle. Release bail to stop (see figure 2).

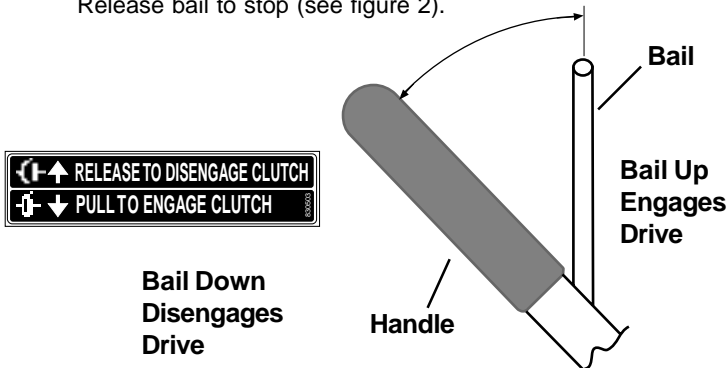


Fig. 1

**Drive gear selection**

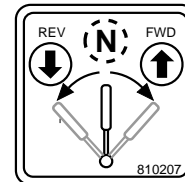


Fig. 2

**16.4** HANDLING & TRANSPORTING:

Using two people to lift machine is recommended. Lift holding the handle and front of nozzle. Secure in place during transport.

**16.5** STORAGE

⚠ Never store engine indoors or in enclosed poorly ventilated areas with fuel in tank, where fuel fumes may reach an open flame, spark or pilot light, as on a furnace, water heater, clothes dryer or other gas appliance.

**If engine is to be unused for 30 days or more, prepare as follows:**

⚠ Be sure engine is cool. Do not smoke. Remove all gasoline from carburetor and fuel tank to prevent gum deposits from forming on these parts and causing possible malfunction of engine. Drain fuel outdoors, into an approved container, away from open flame. Run engine until fuel tank is empty and engine runs out of gasoline.

**NOTE:** Fuel stabilizer (such as Sta-Bil) is an acceptable alternative in minimizing the formation of fuel gum deposits during storage. Add stabilizer to gasoline in fuel tank or storage container. Always follow mix ratio found on stabilizer container. Run engine at least 10 min. after adding stabilizer to allow it to reach the carburetor.

⚠ Do not store with debris in bag.